

FREEHOLD

House - Semi-Detached

# EXTENDED 4 BEDROOM FAMILY HOME - RIVERDENE, EDGWARE

Offers In Excess Of

## £600,000

### FEATURES

- 4 bedroom family house
- Extended at the rear on the ground floor
- Downstairs guest w.c.+ shower
- Loft converted to a large double bedroom
- Large through lounge
- Garage



**SPACE**  
RESIDENTIAL

# 4 Bedroom House - Semi-Detached located in Edgware

Space Residential are delighted to present this fabulous well presented 4-bedroom extended family home.

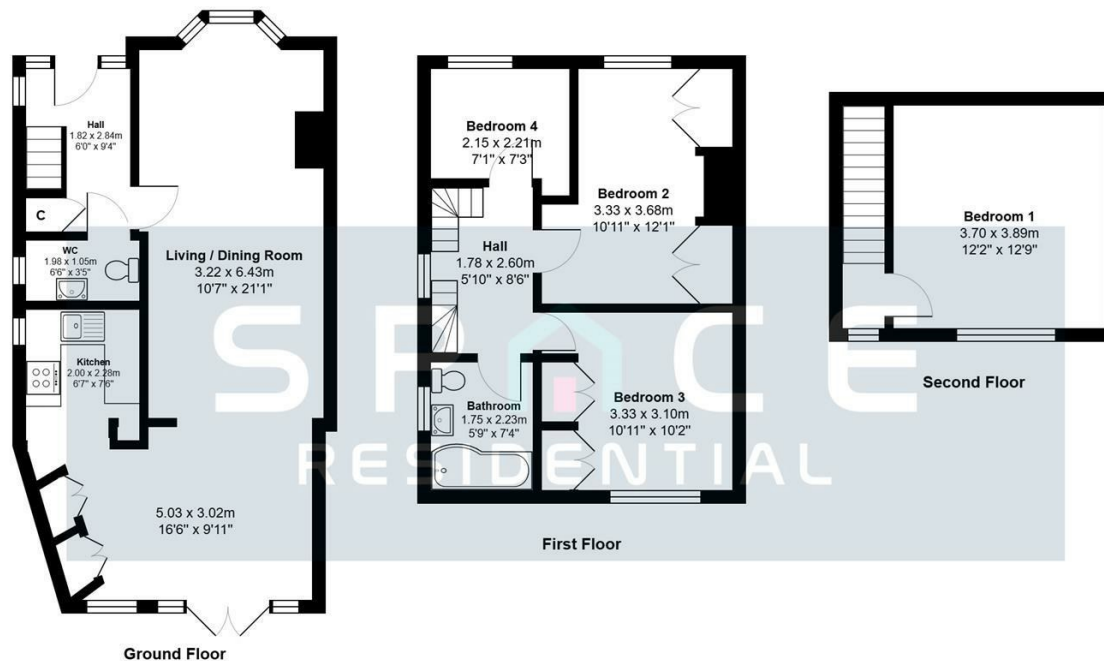
Located mid-way between Mill Hill and Edgware Town centres, the house comprises:

A large through lounge leading into an extension at the rear currently used as a dining room, a modern fitted kitchen, a downstairs guest w.c. with shower. On the first floor there is a large modern family bathroom with 2 double bedrooms and a smaller third single bedroom room.

There are stairs leading up to the loft bedroom where this a further double bedroom.

To the rear is a very generous sprawling garden with a patio and a garage at the side.

There is also off-street parking at the front on a private driveway with space for 2 cars.



Total Area: 104.8 m² ... 1128 ft²

All measurements are approximate and for display purposes only

Call us on

**0208 906 2222**

[info@spaceresidential.com](mailto:info@spaceresidential.com)

[spaceresidential.com](http://spaceresidential.com)

**Council Tax Band**

**E**

Energy Efficiency Rating		
	Current	Potential
Very energy efficient - lower running costs		
(92 plus) <b>A</b>		
(81-91) <b>B</b>		
(69-80) <b>C</b>		
(55-68) <b>D</b>		
(39-54) <b>E</b>		
(21-38) <b>F</b>		
(1-20) <b>G</b>		
Not energy efficient - higher running costs		
<b>England &amp; Wales</b>	EU Directive 2002/91/EC	
		<b>81</b>
	<b>64</b>	

Agents Note: Whilst every care has been taken to prepare these particulars, they are for guidance purposes only. All measurements are approximate and are for general guidance purposes only and whilst every care has been taken to ensure their accuracy, they should not be relied upon and potential buyers are advised to recheck the measurements.

**SPACE**  
RESIDENTIAL